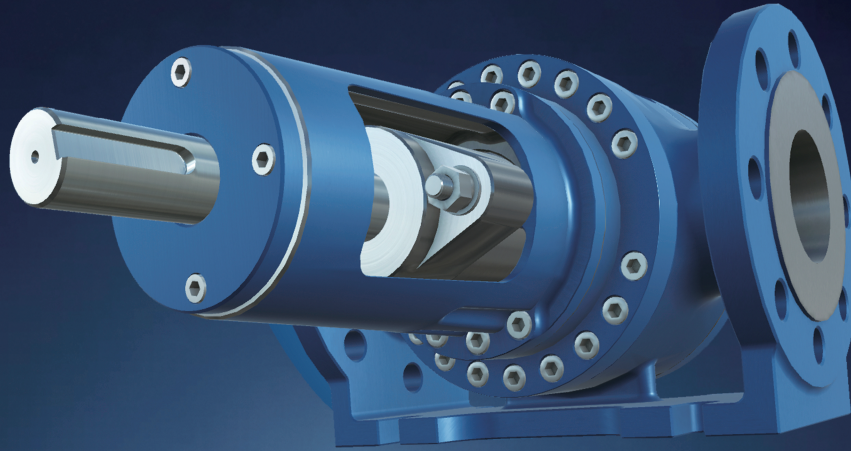


Advanced Manufacturing Hydraulics Instruction



360°
Teaching

Introduction

Advanced Manufacturing Hydraulics Instruction includes **330 3D hydraulic model resources** and **16 hydraulic circuit building tasks**. The exploded views, animations, sections, and perspective views of hydraulic models show the structure and operating principles of key hydraulic components. While building task comprises a directional control circuit, a pressure control circuit, a speed control circuit, and a multi-cylinder operation circuit. By referencing the circuit diagram symbols while building to see the results, it mainly helps learners master the use of hydraulic components.

Composition

3D model resources being divided into 4 modules:

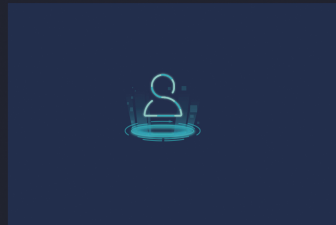
- **Power units**
Comprising gear pumps, vane pumps, and piston pumps.
- **Actuators**
Including hydraulic motors and cylinders.
- **Control valves**
Comprising pressure valves, flow valves, and directional control valves, and the building of a directional control circuit, a speed control circuit, and a pressure control circuit.
- **Accessories**
Comprising tubes, fuel tanks, filters, accumulators, coolers and cooling switches.



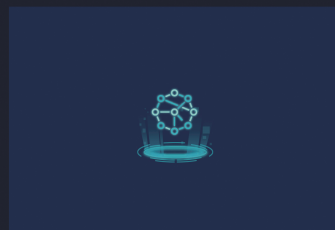
Highlights



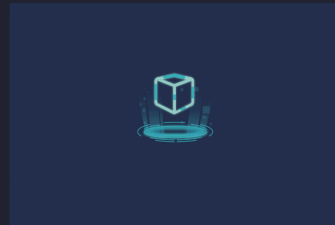
Compatibility with diversified teaching devices including VR/AR devices, interactive whiteboards.



Integration of theory and practice, providing lifelike application scenarios.



Circuit building model settings to realize personalized exploration and strengthen theoretical knowledge.



Interactive operations of all models in three-dimensional space gives teachers and students the freeness of teaching and learning.

Samples

It exhibits the process of converting pressure energy into mechanical energy by single-acting hydraulic cylinder with 3D animation effects.



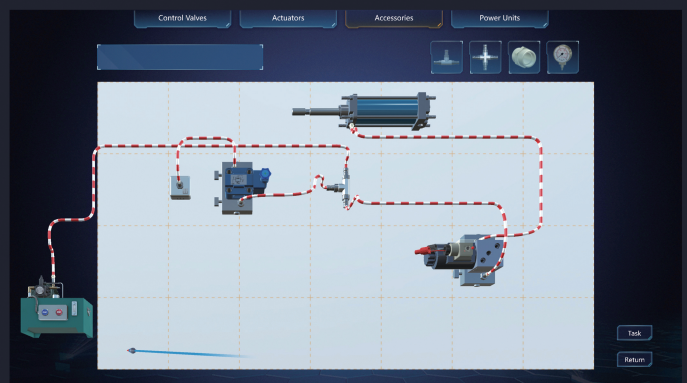
It clearly exhibits internal structure of pilot operated relief valve, which is composed by pilot valve and main valve.



It builds virtual scene to exhibit the process of the directional valve uses the relative movement between the valve core and the valve body to change the direction of the liquid flow.



It provides hydraulic circuit building tasks to help students better understand the symbols and functions of each part.



Jiangxi KMAX Industrial Co., Ltd.

No. 1589, Zishi Road, Xinjian District, Nanchang City, Jiangxi Province

www.kmax-arvr.com

info@kmaxxr.com

+86-400-618-6977